

8026 Adventure Trailer Xtra-wide

NEW MODEL COMING IN
SPRING 2022

TALK TO DEALERS TO
RESERVE YOUR SPOT IN LINE
TO BUY ONE NEXT YEAR

Standard 8026ATX MSRP Starting At:

SPRING 2022

www.CORE-ICE.com

MY228026Av0825.1

CORE ICE 8026 ATX RV



**NEW MODEL COMING IN
SPRING 2022**

- PACKAGE 1**
- TRUMA COMBI FURNACE AND WATER
 - 15 GALLON FRESH WATER TANK
 - 39 GALLON GREY HOLDING TANK
 - 3 GALLON BLACK HOLDING TANK
 - BATHROOM SINK W/ FLUSHING TOILET
 - KITCHEN SINK 12 MONTH WATER SYSTEM USABILITY
 - DRAWER STACK NEXT TO SINK FOR INCREASED STORAGE
 - 21" OVEN W/ 3 BURNER COOKTOP
 - 10 CU FT 12V FRIDGE
 - REAR QUEEN ELEC LIFT BED W/ DINETTE AND QUEEN BED BELOW
 - 68" WALL MOUNT JACK KNIFE SOFA



**NEW MODEL COMING IN
SPRING 2022**

- PACKAGE 2**
- TRUMA COMBI FURNACE AND WATER
 - 15 GALLON FRESH WATER TANK
 - 39 GALLON GREY HOLDING TANK
 - 3 GALLON BLACK HOLDING TANK
 - BATHROOM SINK, SINK, & FLUSHING TOILET IN BATH
 - KITCHEN SINK W/ CUTTING BOARD COVER
 - 12 MONTH WATER SYSTEM USABILITY
 - DRAWER STACK NEXT TO SINK FOR INCREASED STORAGE
 - 21" OVEN W/ 3 BURNER COOKTOP
 - 10 CU FT 12V FRIDGE
 - REAR QUEEN ELEC LIFT BED W/ DINETTE AND QUEEN BED BELOW
 - 3 PEDESTAL CAPTAIN'S CHAIRS
 - ELECTRIC FIREPLACE



**NEW MODEL COMING IN
SPRING 2022**

- PACKAGE 3**
- TRUMA COMBI FURNACE AND WATER
 - 15 GALLON FRESH WATER TANK
 - 39 GALLON GREY HOLDING TANK
 - 3 GALLON BLACK HOLDING TANK
 - BATHROOM SINK, SINK, & FLUSHING TOILET IN BATH
 - KITCHEN SINK W/ CUTTING BOARD COVER
 - 12 MONTH WATER SYSTEM USABILITY
 - DRAWER STACK NEXT TO SINK FOR INCREASED STORAGE
 - 21" OVEN W/ 3 BURNER COOKTOP
 - 10 CU FT 12V FRIDGE
 - REAR QUEEN ELEC LIFT BED W/ DINETTE AND QUEEN BED BELOW
 - 74" WALL MOUNT SOFA
 - ELECTRIC FIREPLACE



**NEW MODEL COMING IN
SPRING 2022**

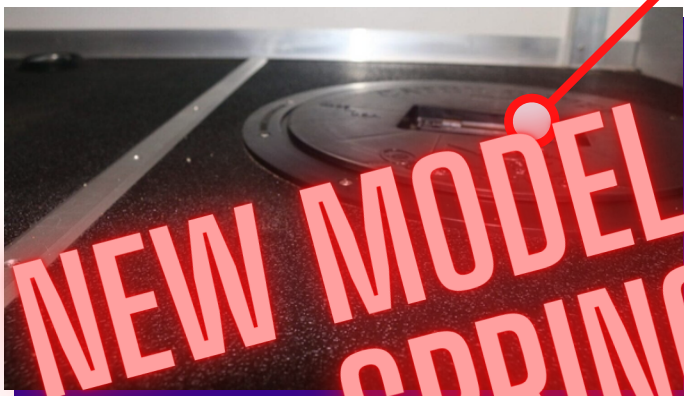
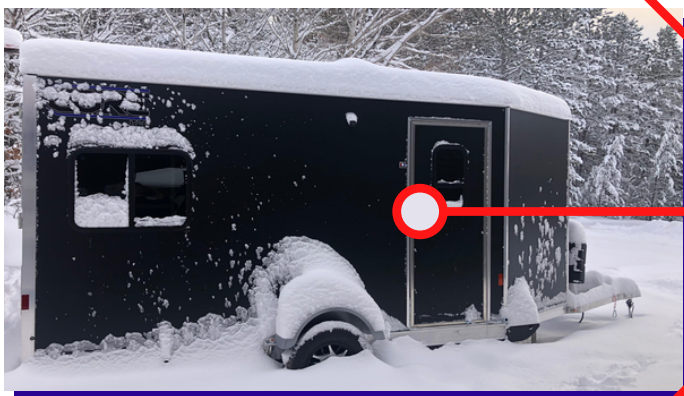
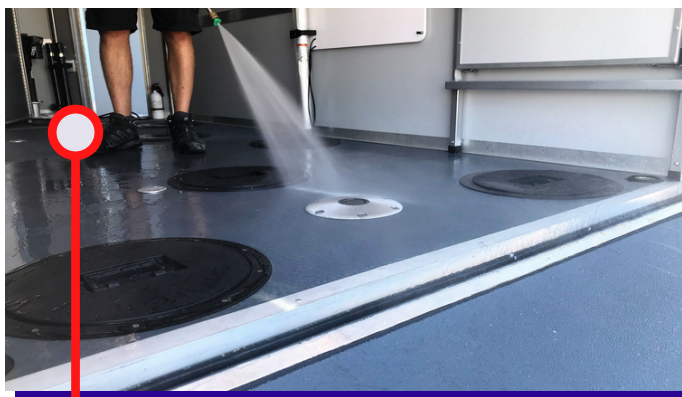
8026 ATX
Adventure Trailer
eXtra-wide

HEIGHT 10
WEIGHT 4490 lbs
TRAILER w/ Brakes GVWR 9999 lbs
LENGTH 348 in

FLOOR PLANS

Features

INTELLI-CORE Structural Composite Construction



The Most Waterproof
The Most Durable
The Best Insulation
No Slip or Rot Floor
INTELLI-CORE Panels

INTELLI-CORE STRUCTURAL COMPOSITE TECHNOLOGY

Numerous advantages over traditional construction methods result in a lighter, stronger, easier to use, and longer lasting product which increases capability and productivity.

Lightweight - The lightest trailers in their class. Easy to tow, even behind utility vehicles.

Durable - Structural composite construction results in a dent resistant, stronger, and more resilient design.

Non-Conductive - Panels are constructed out of fiberglass, foam, and/or honeycomb materials.

Store Indoors or Out - Panels are waterproof, UV resistant, and built to handle the elements.

Easy to Maintain/Clean - Pressure wash inside and out. Smooth surfaces are easy to clean.

No Organic Materials = NO Mold, NO Rot, NO Mildew!

Precision Engineering - All panels, cabinetry, and storage solutions manufactured using CNC equipment for higher quality and industry leading fit and finish.

Thermal Advantage - Paneled construction gives a higher insulated product that is easy to heat/cool at a lower cost.

Easy to Graphic - Smooth, seamless paneled construction provides improved aesthetics and easy graphic application. Panels are available in many color options.

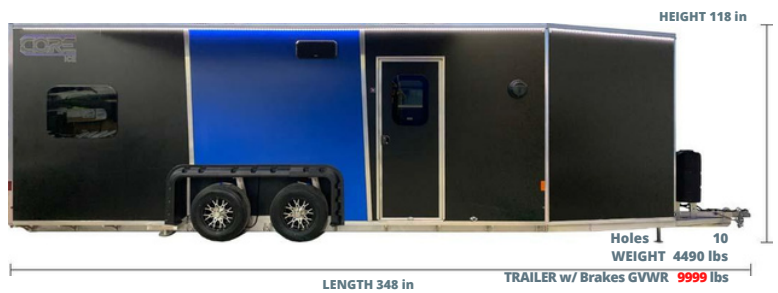
RF Transparent - Composite panels allow for radio wave transparency.

Longer Life - A CORE trailer utilizes manufacturing methods and materials that last longer reducing the frequency and need for replacement.

Easy to Repair - Damage is quickly and easily repaired at a lower cost.

**NEW MODEL
SPRING
2022
COMING IN**

8026ATX



STANDARD FEATURES

Interior Standard Features

Composite Shell Construction

- INTELLI-CORE Structural Composite Floor, Walls, and Roof
- Fully Insulated R15 Roof, R11 Floor, and R11 Walls
- Non-Skid, Impact Resistant Flooring
- Lightweight, Waterproof PVC Cabinetry
- Non-Organic Construction: NO Mold, NO Rot, NO Mildew

Comfort

- Front High-Efficiency Forced Air Truma Combi Furnace
- Rear High-Efficiency Forced Air Truma Vario Heat Furnace
- High Efficiency, Low Profile A/C Unit (11K BTU, 11 amps Power Draw)

Electrical

- Bluetooth Capable Unit Control Through Phone App
- Perimeter LED Lighting w/ Dimmer Control; LED Task Lighting
- 110V Outlet, 12V Outlet, USB Charge ports
- 40 Amp Power Center, Battery Gauge, Battery Disconnect Switch
- AM/FM/CD/DVD Stereo w/Bluetooth & Marine Speakers
- 40" Sidewall TV on Locking Side Arm Mount
- Digital King Omni Pro Antenna
- LP/CO Alarm, Smoke Detector, Fire Extinguisher, First Aid Kit

Cooking

- 21" Oven and 3 Burner Cooktop w/ Flush Glass Top and Exhaust
- Stainless Steel 1 Cu Ft Microwave

Furniture

- 60" Queen Overhead Electric Lift Bed
- Rear Rollover Sofa and 2 Seater (2 Seats)
- Premium Comfortable Chair (Chair)
- RV1 - x2
- RV2 - x3
- RV3 - Opt

Exterior Standard Features

Construction

- INTELLI-CORE Structural Composite Floor, Walls, and Roof
- Aluminum Alloy Frame, 380 Deg Welds at Joints
- Aluminum Wheels
- Long Arm Torsion Suspension
- High-Speed Electric Jack Lift/ Lower System with Push Button Controls
- Fully Insulated Ramp Door w/ 86" x 85.5" Rear Opening
- Color Matched INTELLI-CORE Structural Composite Doors

Electrical

- 30 Amp Generator/Shore Power Plug
- LED Trailer Lighting
- Full Perimeter LED Lighting, Rear Work Lights, Front Work Light

Certifications

- NATM Compliance
- Compliance with NFPA and NEC Building Requirements

RV Features

Year-Round Usability

- Advanced Water System that is Usable 365 Days a Year
- Quick, Easy Drain Down

Furnace and Water Heater in One

- Single Truma Combi Appliance for Both Functions Reduces Propane and Electrical Requirements Only One Small Hole in the Wall for the Intake and Exhaust
- Electric Fireplace in Side Entertainment Center

Kitchenette

- Kitchen Sink

Refrigeration

- Large 10 cu ft Refrigerator that Runs on 12V. Run It Down the Road; No Hole in the Wall!

Tank Capabilities

- 39 Gallon (15 Gallon RV1) Fresh Water Tank
- 39 Gallon (N/A RV1) Grey Water Tank
- 33 Gallon Black Water (Combined Grey/Black RV1)

Bathroom

- Full Flushing Toilet
- Shower (N/A RV1)
- Sink in Bathroom

Secondary Heat Sources

- Electric 110V Fireplace (Optional)
- Truma Combi w/ Incorporated 110V Heating System

OPTIONAL FEATURES

Electrical

- \$xxxx - Extra Interior Outlet
- \$xxxx - 12V Power Pod (1 12V Pug and 2 USB charge ports)
- \$xxxx - Armless Electric Side Awning w/ Auto Rain and Wind Control
- \$x xx- Exterior Flasher Kit (silent flasher system incorporated into exterior running lights)
- \$xxxx - Dual Battery Kit (includes a second battery box, vent, and dual battery disconnect switch w/ all wiring)
- \$xxxx - Interior RGB Kit w/ RGB Control Center
- \$xxxx - Exterior RGB Kit w/ RGB Control Center

Entertainment

- \$xxxx - Premium 75W Marine Speaker Upgrade
- \$xxxx - Fusion Exterior In-Wall Marine Sound System
- \$xxxx - Exterior Coax Port w/ Adaptor (Upper Deck)

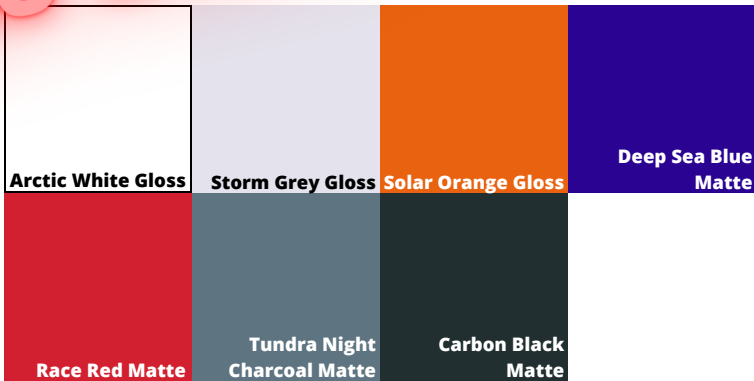
Interior Finish

- \$xxxx - Premium Interior Finish (Marine Grade, UV Resistant, Easy Clean)
- \$xxxx - Premium Interior Upholstery (Seat, Bench, and 15" Post)
- \$xxxx - Premium Interior Upholstery (Chair, Mount, and 12" Post)
- \$xxxx - Premium Interior Upholstery Upgrade
- \$xxxx - Premium Interior Upholstery Upgrade

Holes

- \$xxxx - Delete All Holes
- \$xxxx - Delete 1 Hole
- \$xxxx - Delete 2 Holes
- \$xxxx - Delete 3 Holes
- \$xxxx - Delete 4 Holes
- \$xxxx - Delete 5 Holes
- \$xxxx - Delete 6 Holes
- \$xxxx - Delete 7 Holes
- \$xxxx - Delete 8 Holes
- \$xxxx - Delete 9 Holes
- \$xxxx - Delete 10 Holes
- \$xxxx - Delete 11 Holes
- \$xxxx - Delete 12 Holes
- \$xxxx - Delete 13 Holes
- \$xxxx - Delete 14 Holes
- \$xxxx - Delete 15 Holes
- \$xxxx - Delete 16 Holes
- \$xxxx - Delete 17 Holes
- \$xxxx - Delete 18 Holes
- \$xxxx - Delete 19 Holes
- \$xxxx - Delete 20 Holes

Exterior Trim w/ Custom Color Options



STD 8026ATX: \$ T.B.D *

*MSRP does not include local taxes, registration, or destination fees.

NOTES